



CARREL-ELECTRADE LTD

not just products... solutions!



CROMPTON INSTRUMENTS DUAL LOAD WIRING SOLUTION

SIMPLE, QUICK AND ERROR-FREE INSTALLATION
FOR DUAL LOAD APPLICATIONS



CARREL-ELECTRADE LIMITED

Auckland Tel: 09-525 1753
Fax: 09-525 1756

Christchurch Tel: 03-366 1242
Fax: 03-379 1991

Email: sales@carrel-electrade.co.nz
Web: www.carrel-electrade.co.nz

DUAL LOAD WIRING SOLUTION

SIMPLE, QUICK AND ERROR-FREE INSTALLATION FOR DUAL LOAD APPLICATIONS.

The new Dual Load Wiring Solution provides a cost-effective, intelligent system for measuring energy consumption in split load applications such as Power and Lighting loads. This solution comprises of Integra DL1 digital metering system, dual load 3-in-1 Current Transformers (CT), RJ12 connectors and wiring looms for easy and quick installation.



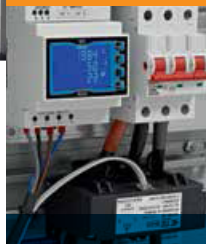
Key Features

- A cost-effective and space saving solution which is perfect for all new Power and Lighting, or dual load, distribution and panel boards
- Includes 1.5m CT to meter cable
- RJ12 socket for fast connection and to eliminate wiring errors
- Low 60A current transformer option for more energy-efficient loads
- CT mounting options of busbar, DIN-rail and metal feet are supplied as standard
- Compact 4-module DIN-rail design of the Integra DL1 DMS

WIRING SOLUTION



THREE PHASE 3-IN-1 CURRENT TRANSFORMER INCLUDES RJ12 CONNECTOR AND 1.5M WIRING LOOMS FOR QUICK AND ERROR FREE INSTALLATION



Integra DL1 Dual Load Digital Metering System

Designed, developed and manufactured in the UK, the Integra DL1 digital metering system is ideal for low voltage applications and provides a cost effective way of metering Power and Lighting boards in a single meter. It also has the programmable option to measure either a continuous busbar application or individual circuits.



ONE METER

2 METERS IN 1 FOR MEASURING POWER AND LIGHTING ENERGY CONSUMPTION



Displayed Parameters

Power (Load 1)	Lighting (Load 2)	System
Current L1	Current L1	Current L1
Current L2	Current L2	Current L2
Current L3	Current L3	Current L3
kW L1	kW L1	Voltage L1
kW L2	kW L2	Voltage L2
kW L3	kW L3	Voltage L3
Average System Volts	Average System Volts	Average System Volts
Average System Current	Average System Current	Average System Current
Average System kW	Average System kW	Total System kWh
kWh Import	kWh Import	kWh Import - Power
		kWh Import - Lighting
		kWh Import - Total
		Frequency
		Power Factor (PF)

Key Features

- Provides measurement isolation and conversion of all main electrical parameters, from two three phase loads, in a single meter
- Continuous busbar or individual busbar metering
- Can be used in single and three-phase unbalanced four-wire electrical systems,
- Accuracy Class 1 for active energy
- The integrated microprocessor offers exceptional handling of distorted waveforms
- User programmable CT ratio and configuration
- Built-in Modbus RTU RS485 as standard
- Optional DIN 96mm panel mounting bezel can be supplied

Product Code

Integra DL1 DMS DL1-01

TWO LOADS

Key Features

- Power and Lighting indicators can be changed to Load 1 and Load 2
- Each Load can be programmed for CT primary of 60A, 125 A or 250A
- Can be programmed for one individual power load when required
- Additional facility to accumulate the total system power/kWhs - displaying the combined Power and Lighting system total parameters

Power or Lighting import kWh



Amps per phase



Individual import kWh readings



System import kWh



Display test



3-IN-1 CT

Dual Load CT

The 3-in-1 current transformer range are for use with the Integra DL1 digital metering system which combines three traditional current transformers in one moulding case with a RJ12 connection for simple and easy error free installation.

Key Features

- Busbar DIN-rail and metal feet (mounting hardware supplied)
- RJ12 socket for fast connection eliminate wiring errors
- Cable included (length 1.5 m)
- Low 60A ratio for more energy efficient loads
- Aperture hole centres 35mm

Product Codes	Primary Current	VA at Class 1	VA at Class 0.5
DL3N1-35-60/0.1	60A	0.25	-
DL3N1-35-125/0.1	125A	0.5	0.25
DL3N1-35-250/0.1	250A	0.5	0.25

For email or phone, go to:

crompton-instruments.com

FOR MORE INFORMATION: TE Technical Support Centres

UK +44 1376 509 533
USA: +1 800 327 6996
Australia +61 1300 656 090
Singapore +65 6590 5151
Hong Kong: +852 2790 9609

www.crompton-instruments.com

© 2014 TE Connectivity Ltd. family of companies. All Rights Reserved. EPP-2239-03/15.

TE Connectivity and the TE connectivity (logo) are trademarks of the TE Connectivity Ltd. family of companies. Other logos, product and Company names mentioned herein may be trademarks of their respective owners. While TE has made every reasonable effort to ensure the accuracy of the information in this brochure, TE does not guarantee that it is error-free, nor does TE make any other representation, warranty or guarantee that the information is accurate, correct, reliable or current. TE reserves the right to make any adjustments to the information contained herein at any time without notice. TE expressly disclaims all implied warranties regarding the information contained herein, including, but not limited to, any implied warranties of merchantability or fitness for a particular purpose. The dimensions in this brochure are for reference purposes only and are subject to change without notice. Specifications are subject to change without notice. Consult TE for the latest dimensions and design specifications.



Wiring Solution Ordering Process Example

Step 1 - Select the meter

Product Codes	
Integra DL1 DMS	DL1-01

Step 2 - Select CT for Power Load 1

Product Codes	Primary Current
DL3N1-35-60/0.1	60A
DL3N1-35-125/0.1	125A
DL3N1-35-250/0.1	250A

Step 3 - Select CT for Lighting Load 2

Product Codes	Primary Current
DL3N1-35-60/0.1	60A
DL3N1-35-125/0.1	125A
DL3N1-35-250/0.1	250A