



DDS353H-2 Multi-Function Single Phase Power Meter

Single phase DIN RAIL multi-function power meter, rated up to 100A direct connect.

A slim single unit width of 18mm with support for Modbus-RTU RS485 communications.

Suitable for energy monitoring in both domestic and commercial power distribution system.

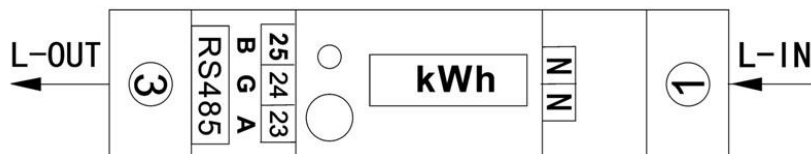
Features

- Available parameters: kWh, kvarh, V, A, kW, kVar, kVA, PF
- DIN RAIL mounted, DIN EN 50022.
- Only 18 mm wide, but rated for 100A direct connect.
- Supports Modbus-RTU RS485 communications.
- Blue backlight, which makes for easy reading in low light.
- Scrolling display for current (A) , voltage (V) , Power (kW) etc.
- Auto scrolling mode with 5s interval or manual scrolling using the front panel button.
- Measures both active and reactive energy accurately.
- Case material: PBT and PC
- Protection Class: IP51 (For indoor usage)
- Optional Energy import and export metering



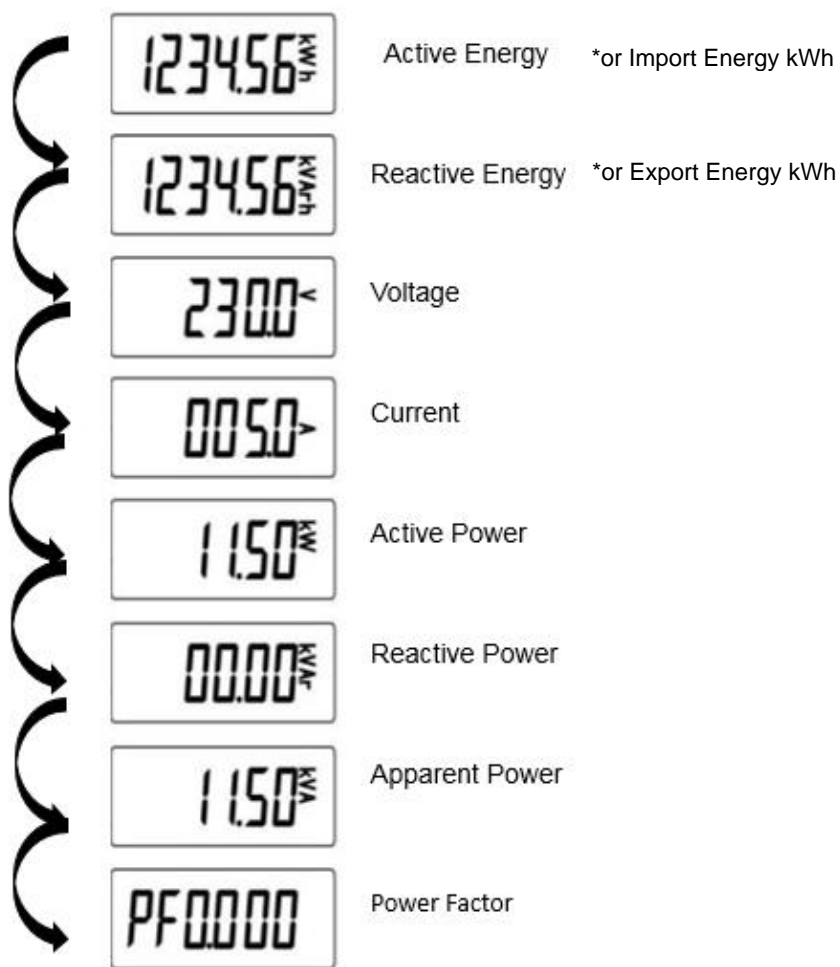
Technical Parameters	
Content	Parameters
Standard	EN50470-1/3 Accuracy Class B(1%)
Rated Voltage:	230V
Rated Current:	0,25-5(100)A
LED Flash:	1000 imp/kWh
Frequency:	50Hz
LCD Display:	LCD 5+1=99999.9kWh
RS485 communication:	Modbus-RTU 9600 Baud, no parity,8 bits,1 stop bit
Working Temperature:	-25~55°C
Power Consumption:	≤8VA,≤0.4W
Average Humidity:	≤75% (Non Condensing)
Maximum Humidity:	≤95%
Start Current:	0.004Ib
Materials:	Case: PBT,PC

Wiring Connection

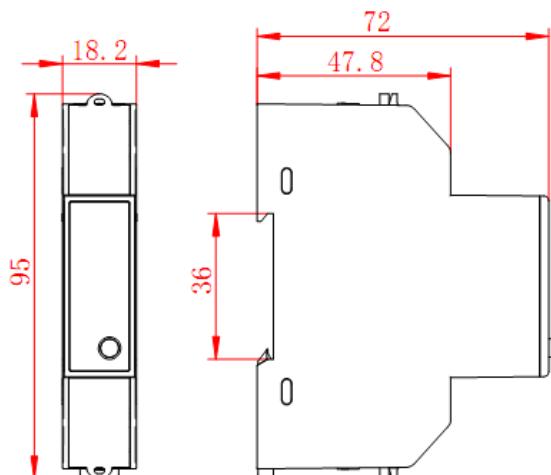


N connections need only to be connected to Neutral. This is a voltage connection only and does not carry the load current.

LCD Parameter selection – push button to scroll to next screen



* with energy import/export mode enabled



Dimensions