

connectech terminals

Terminal Blocks, Engineered For Quality And Performance

Every component of the Terminal Block is designed to provide a product that offers efficient functionality. The high quality materials and contacts, effective current bar geometry, screw/spring clamping arrangement and crucial foot profile, for firm yet flexible DIN rail mounting, provide the cutting edge performance to **salzer connectech** range of Terminal Blocks. Here's how:

- The screw or spring clamp which is the heart of the terminal block, is engineered for a perfect grip over solid or stranded wires
- The screws are rolled for threading to provide a calibrated tightening torque for securing wires in the clamp
- The special spring steel clamps ensure a tight, yet gentle 'non-fraying' grip over solid or stranded wire
- The finely crafted current bar makes a safe bridge for the rated current
- The **Polyamide 66** housing enclosing the clamps, provides the current bar with safe creepage and clearances, long life insulation and unique flexible yet firm foot contours, for quick and secure mounting on DIN rails
- Series 'U' Terminals offer a unique clamping foot, suitable for DIN 35, DIN 35-15 and DIN 32 rails, meaning flexibility to permit lower stock levels at Distributors, Panel Builders and end Users.
- The Terminals are certified by UL and CSA for North America, and carry the respective as well as mark.

salzer connectech Terminal Blocks incorporating international technology combine well with Salzer Group's technical acumen of over two decades to offer efficient solutions for wiring and interfacing, to emerge as a truly winning combination.





Screw Clamp - Polyamide 66

STANDARD FEED-THROUGH



SCRW2.5U

45 x 43 x 5 mm

IEC/EN : 0.5-2.5 mm², 24 A, 750 V, 0.4 Nm
UL/CSA : 22-14 AWG, 20 A, 600 V, 7 lb-in



SCRW4U

45 x 43 x 6 mm

IEC/EN : 0.5-4 mm², 32 A, 750 V, 0.5 Nm
UL/CSA : 22-12 AWG, 25 A, 600 V, 7 lb-in



SCRW6U

47 x 43 x 8 mm

IEC/EN : 1.5-6 mm², 41 A, 750 V, 0.8 Nm
UL/CSA : 22-8 AWG, 50 A, 600 V, 9 lb-in



SCRW10U

47 x 43 x 10 mm

IEC/EN : 1.5-10 mm², 57 A, 750 V, 1.2 Nm
UL/CSA : 15-7 AWG, 600 V, 65 A, 14 lb-in



SCRW16U

47 x 43 x 12 mm

IEC/EN : 2.5-16 mm², 76 A, 750 V, 2.0 Nm
UL/CSA : 20-4 AWG, 70 A, 600 V, 14 lb-in



SCRW25U

56 x 49.5 x 12 mm

IEC/EN : 6-25 mm², 101 A, 750 V, 2 Nm
UL/CSA : 9-3 AWG, 115 A, 600 V, 14 lb-in



SCRW35U

58 x 52.5 x 15 mm

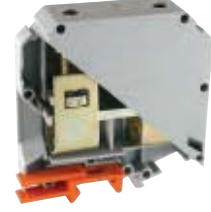
IEC/EN : 10-35 mm², 125 A, 750 V, 2.5 Nm
UL/CSA : 8-2 AWG, 145 A, 600 V, 25 lb-in



SCRW50U

75.5 x 71 x 20.5 mm

IEC/EN : 16-50 mm², 150 A, 1000 V, 6.8 Nm
UL/CSA : 2/0-6 AWG, 150 A, 600 V, 60 lb-in



SCRW95U

90 x 83 x 25 mm

IEC/EN : 16-95 mm², 232 A, 1000V, 18.2 Nm
UL/CSA : 4/0-2 AWG, 230A, 600V, 160 lb-in

MULTI-CONNECTION-FEED THROUGH



SCRW4U 1-2

47 x 46.5 x 6 mm

IEC/EN : 0.5-4 mm², 32 A, 600 V, 0.5 Nm
UL/CSA : 22-12 AWG, 25 A, 600 V, 7 lb-in



SCRW4U 2-2

51.5 x 65 x 6 mm

IEC/EN : 0.5-4 mm², 32 A, 600 V, 0.5 Nm
UL/CSA : 22-12 AWG, 25 A, 600 V, 7 lb-in



DBL4U

54 x 55.5 x 6 mm

IEC/EN : 0.5-4 mm², 32 A, 400 V, 0.5 Nm
UL/CSA : 22-12 AWG, 25 A, 300/600V, 6 lb-in



DBL4U(I.S)

54 x 55.5 x 6 mm

IEC/EN : 0.5-4 mm², 32 A, 400 V, 0.5 Nm
UL/CSA : 22-12 AWG, 25 A, 600 V, 7 lb-in



DBLOFF4U

63 x 68 x 6 mm

IEC/EN : 0.5-4 mm², 32 A, 600 V, 0.5 Nm
UL/CSA : 22-12 AWG, 25 A, 600 V, 7 lb-in

TRIPLE LEVEL FEED THROUGH



TL2.5U

67 x 84 x 6 mm

IEC/EN : 0.5-2.5 mm², 24 A, 300 V, 0.4 Nm
UL/CSA : 12-22 AWG, 20 A, 300 V, 4.5 lb-in



TL2.5UH

67 x 61 x 6 mm

IEC/EN : 0.5-2.5 mm², 24 A, 300 V, 0.4 Nm
UL/CSA : 12-22 AWG, 20 A, 300 V, 4.5 lb-in



TL2.5UHL

67 x 61 x 6 mm

IEC/EN : 0.5-2.5 mm², 24 A, 300 V, 0.4 Nm
UL/CSA : 12-22 AWG, 20 A, 300 V, 7 lb-in

CLIP FEED-THROUGH



SCRW4UCLIP

67 x 43 x 6 mm

IEC/EN : 0.5-4 mm², 10 A, 250V
UL/CSA : 22-12 AWG, 10 A, 300V, 2.4x0.8 mm



DBL4UCLIP

84 x 55.5 x 6 mm

IEC/EN : 0.5-4 mm², 10 A, 250V
UL/CSA : 22-12 AWG, 10 A, 300V, 2.4x0.8 mm



Screw Clamp - Polyamide 66

MICRO FEED-THROUGH



M4

29 x 27 x 6 mm
IEC/EN : 0.5-4 mm², 32 A, 400 V, 0.5 Nm
UL/CSA : 22-12 AWG, 25 A, 300/600 V, 6 lb-in



M4S

29 x 27 x 6 mm
IEC/EN : Upto 1.5 mm², 15 A, 160 V, 0.5 Nm
UL/CSA : 22-12 AWG, 25 A, 300 V, 7 lb-in



M4SU

29 x 27 x 6 mm
IEC/EN : Upto 1.5 mm², 15 A, 160 V, 0.5 Nm
UL/CSA : 22-12 AWG, 25 A, 300 V, 7 lb-in

SAFETY FUSE LINK FEED-THROUGH

for Ø5 x 20/25 mm fuse



F4U

43 x 58 x 8 mm
IEC/EN : 0.5-4 mm², 6.3 A, 750 V, 0.5 Nm
UL/CSA : 22-12 AWG, 6.3 A, 600 V, 7 lb-in

for Ø5 x 20/25 mm fuse with indicator



F4U(L)

43 x 58 x 8 mm
IEC/EN : 0.5-4 mm², 6.3 A, 750 V, 0.5 Nm
UL/CSA : 22-12 AWG, 6.3 A, 600 V, 7 lb-in

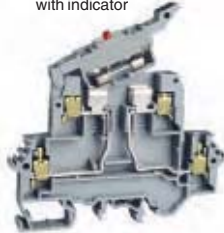
for Ø5 x 20/25 mm fuse, double level



FDBL4U

66 x 88 x 8 mm
IEC/EN : 0.5-4 mm², 6.3 A/32 A, 600 V, 0.5 Nm
UL/CSA : 22-12 AWG, 6.3 A/25 A, 600 V, 7 lb-in

for Ø5 x 20/25 mm fuse, double level
with indicator



FDBL4UE(LR)

66 x 88 x 8 mm
IEC/EN : 0.5-4 mm², 6.3 A/32 A, 600 V, 0.5 Nm
UL/CSA : 22-12 AWG, 6.3 A/25 A, 600 V, 7 lb-in

for Ø5 x 20/25 mm fuse



F6U

60 x 43 x 8 mm
IEC/EN : 1.5-6 mm², 6.3 A, 750 V, 0.8 Nm
UL/CSA : 22-8 AWG, 6.3 A, 600 V, 14 lb-in

PANEL MOUNT FEED THROUGH



P4

28 x 27 x 6 mm
IEC/EN : 0.5 - 4 mm², 32 A, 400 V, 0.5 Nm
UL/CSA : 22-12 AWG, 25 A, 300 V, 7 lb-in

DISCONNECT AND TEST



KN4U

46 X 46.3 x 6 mm
IEC/EN : 0.5-4 mm², 16 A, 750 V, 0.5 Nm
UL/CSA : 22-12 AWG, 16 A, 600 V, 7 lb-in



DISCT6U

57 X 63 x 8 mm
IEC/EN : 1.5-6 mm², 41 A, 750 V, 1.2 Nm
UL/CSA : 16-8 AWG, 41 A, 600 V, 14 lb-in



DISCT6US

57 x 63 x 16 mm
IEC/EN : 1.5-16 mm², 10 A, 300 V, 1.2 Nm
UL/CSA : 16-8 AWG, 10 A, 300 V, 14 lb-in



DISCTL4U

60 x 43 x 8 mm
IEC/EN : 0.5 - 4 mm², 32 A, 750 V, 0.5 Nm
UL/CSA : 22-12 AWG, 25 A, 600 V, 7 lb-in



DISCTL6U

60 x 43 x 8 mm
IEC/EN : 1.5 - 6 mm², 6.3 A, 750 V, 0.8 Nm
UL/CSA : 22-8 AWG, 6.3 A, 600 V, 14 lb-in



Screw Clamp - Polyamide 66

salzer

GROUNDING NEUTRAL TERMINALS AND BUSBAR SYSTEMS



G4

45.4 x 54.2 x 6 mm
IEC/EN : 0.5-4 mm², 32 A, 0.5 Nm
UL/CSA : 22-12 AWG, 25 A, 7 lb-in



G6

47 x 43 X 8 mm
IEC/EN : 1.5-6mm², 41A, 0.8 Nm
UL/CSA 20-8 AWG, 50A, 9 lb-in



G10

50 x 45 x 10 mm
IEC/EN : 1.5-10 mm², 57 A, 1.2 Nm
UL/CSA : 16-8 AWG, 65 A, 14 lb-in



G16

47 x 43 X 12 mm
IEC/EN : 2.5-16mm², 70A, 1.2Nm
UL/CSA 20-4 AWG, 85A, 14 lb-in



G35

61.5 x 58 x 16 mm
IEC/EN : 10-35 mm², 125 A, 2.5 Nm
UL/CSA : 8-3 AWG, 145 A, 25 lb-in



GM4

28.5 x 27 x 6 mm
IEC/EN : 0.5-4 mm², 32 A, 0.5 Nm
UL/CSA : 22-12 AWG, 25 A, 7 lb-in



GN4

30 x 23.3 x 7.5 mm
IEC/EN : 0.5-6 mm², 41A, 0.8 Nm
UL/CSA : 22-12 AWG, 25 A, 14 lb-in



GN16

36 x 23.3 x 9.8 mm
IEC/EN : 6-16 mm², 76A, 2.0 Nm
UL/CSA : 9-6 AWG, 76A, 14 lb-in



GN35

45 x 27.3 x 14.5 mm
IEC/EN : 10-35 mm², 125A, 2.5 Nm
UL/CSA : 7-2 AWG, 125 A, 25 lb-in

DISTRIBUTION BLOCKS



DISBL4

45 x 43 x L mm
IEC/EN : Input : 6-16 mm², 750 V, 2.0 Nm
Output Each : 0.5-4 sq.mm, 32 A, 750 V, 0.5 Nm
UL/CSA : Input : 10-8 AWG, 50 A, 600 V, 26 lb-in
Output Each : 22-12 AWG, 25 A, 600 V, 7 lb-in



DISBL4(1)

45 x 43 x L mm
IEC/EN : Input : 6-16 mm², 750 V, 2.0 Nm
Output Each : 0.5-4 sq.mm, 32 A, 750 V, 0.5 Nm
UL/CSA : Input : 10-8 AWG, 50 A, 600 V, 26 lb-in
Output Each : 22-12 AWG, 25 A, 600 V, 7 lb-in



DISBL6

47 x 43 x L mm
IEC/EN : Input : 6-25 mm², 750 V, 3 Nm
Output Each : 1.5-6 sq.mm, 41 A, 750 V, 0.8 Nm
UL/CSA : Input 10-6 AWG, 95 A, 600 V, 25 lb-in
Output Each : 22-8 AWG, 50 A, 600V, 9 lb-in



DISBL10

43 x 48 x L mm
IEC/EN : Input : 10-35 mm², 750 V, 6 Nm,
Output Each : 1.5-10 sq.mm , 57 A, 750V, 1.2 Nm
UL/CSA : Input : 8-1/0 AWG, 130 A, 600 V, 53 lb-in
Output Each : 16-6 AWG, 65 A, 600 V, 14 lb-in

FEED-THROUGH FOR HIGHLY CORROSIVE AND EXPLOSIVE ENVIRONMENTS



SCRW2.5UCR/4UCR

45 x 43 x 5/6 mm
IEC/EN : 0.5-2.5/4 mm², 24/32 A, 750 V,
0.4/0.5 Nm
UL/CSA : 22-14/12 AWG, 20/25 A, 600 V,
7 lb-in



SCRW6UCR/10UCR

47 x 43 x 8/10 mm
IEC/EN : 1.5-6/10 mm², 41/57 A, 750 V,
0.8/1.2 Nm
UL/CSA : 22/15-8/7 AWG, 50/65 A, 600 V,
9/14 lb-in



SCRW16UCR

47 x 43 x 12 mm
IEC/EN : 2.5-16 mm², 76 A, 750 V,
2.0 Nm
UL/CSA : 14-6 AWG, 70 A, 600 V,
14 lb-in



SCRW25UCR

56 x 49.5 x 12 mm
IEC/EN : 6-25 mm², 101 A, 750 V,
2.0 Nm
UL/CSA : 9-3 AWG, 115 A, 600 V,
14 lb-in



SCRW35UCR

58 x 52.5 x 15 mm
IEC/EN : 10-35 mm², 125 A, 750 V,
2.5 Nm
UL/CSA : 7-2 AWG, 145 A, 600 V,
25 lb-in



Spring Clamp - Polyamide 66

STANDARD, FEED-THROUGH



CAGE2.5

36 x 58 x 5 mm
IEC/EN : 2.5 mm², 24 A, 750 V,
UL/CSA : 22-14 AWG, 20 A, 600 V



CAGE4

42 x 65 x 6 mm
IEC/EN : 4 mm², 32 A, 750 V
UL/CSA : 22-12 AWG, 25 A, 600 V



CAGE6

45 x 72 x 8 mm
IEC/EN : 6 mm², 41 A, 750 V
UL/CSA : 22-8 AWG, 50 A, 600 V

MULTI CONNECTION FEED-THROUGH



CAGE2.5 1-2

36 x 74 x 5 mm
IEC/EN : 2.5 mm², 24 A, 750 V
UL/CSA : 22-14 AWG, 20 A, 600 V



CAGE4 1-2

42 x 85 x 6 mm
IEC/EN : 4 mm², 32 A, 750 V
UL/CSA : 22-12 AWG, 25 A, 600 V

MULTI CONNECTION FEED-THROUGH



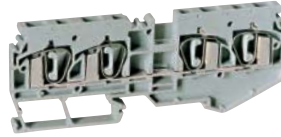
CAGE6 1-2

45 x 94 x 8 mm
IEC/EN : 6 mm², 41 A, 750 V
UL/CSA : 22-8 AWG, 43 A, 600 V



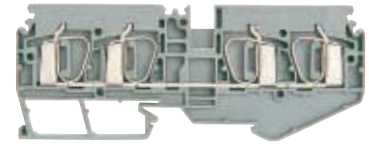
CAGE2.5 2-2

36 x 90 x 5 mm
IEC/EN : 2.5 mm², 24 A, 750 V
UL/CSA : 22-14 AWG, 20 A, 600 V



CAGE4 2-2

42 x 105 x 6 mm
IEC/EN : 4 mm², 32 A, 750 V
UL/CSA : 22-12 AWG, 25 A, 600 V



CAGE6 2-2

45 x 116 x 8 mm
IEC/EN : 6 mm², 41 A, 750 V
UL/CSA : 22-8 AWG, 43 A, 600 V

GROUNDING (EARTH)



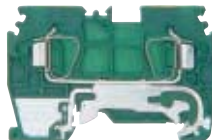
CAGEG2.5

36 x 58 x 5 mm
IEC/EN : 2.5 mm², 24 A
UL/CSA : 22-14 AWG, 20 A



CAGEG4

42 x 65 x 6 mm
IEC/EN : 4 mm², 32 A
UL/CSA : 22-12 AWG, 25 A



CAGEG6

45 x 72 x 8 mm
IEC/EN : 6 mm², 41 A
UL/CSA : 22-8 AWG, 50 A

PANEL MOUNT FEED THROUGH



CAGEP2.5

27 x 35 x 5 mm
IEC/EN : 2.5 mm², 24 A, 750 V
UL/CSA : 22-14 AWG, 20 A, 600 V



CAGEP2.5 2-2

27 x 35 x 10 mm
IEC/EN : 2.5 mm², 24 A, 750 V
UL/CSA : 22-14 AWG, 20 A, 600 V

STUD TYPE



STUDB4U

44 x 50, Terminal Pitch – 17mm
IEC/EN : 1.5-10mm², 57A, 600V, 1.2Nm
M4 / Screw Driver



STUDB5U

44 x 50, Terminal Pitch – 17mm
IEC/EN : 1.5-16mm², 76A, 600V, 2Nm
M5 / Screw Driver



STUDN4U

44 x 50, Terminal Pitch – 17mm
IEC/EN : 1.5-10mm², 57A, 600V, 1.2Nm
M4 / Nut Driver



STUDN5U

44 x 50, Terminal Pitch – 17mm
IEC/EN : 1.5-16mm², 76A, 600V, 2Nm
M5 / Nut Driver



STUDN6U

44 x 50, Terminal Pitch – 17mm
IEC/EN : 1.5-35mm², 125A, 600V, 3Nm
M6 / Nut Driver



Accessories

for secure positioning of the Terminals

END CLAMPS



ES1S

for DIN 35 rails



ES2S

for DIN 35 - 15 rails



ES3S

for DIN 32 rails



ES1N

for DIN 15 rails



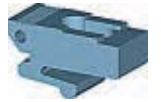
ES2N

for DIN 32/35/35-15 rails



ES3N

for DIN 35/35-15 rails



ES4N

for DIN 32 rails

MOUNTING RAILS



DIN 32 Rail



DIN 35 - 15 Rail



DIN 35 Rail



DIN 15 Rail

MOUNTING BRACKETS



B1S

for all rails, at an angle



B35N

for panel mount terminals, on DIN 35 rails

END PLATES



For ordering End plate please prefix EP Before product code (ie) for end plate of SCRW2.5 cat code : EPSCRW2.5

PARTITION PLATES



For ordering Partition plate please prefix PP Before product code (ie) for Partition plate of SCRW2.5 cat code : PPSCRW2.5

CROSS CONNECTING ACCESSORIES



Shorting Sleeves



Shorting Stud



Insulated Pre Assembled Shorting



Insulated Push-In Type Shorting Links



Comb Links

Removable Shorting Links



Permanent Shorting Links

MARKERS

K Markers



Group Markers

MARKER HOLDERS



GRPMK6



GRPMK7

Please call for Marker Holder Cat. Ref. for different applications

PROTECTIVE COVERS AND HOLDING PLATES

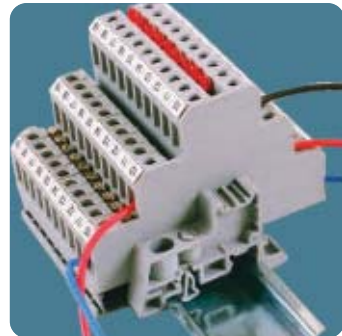
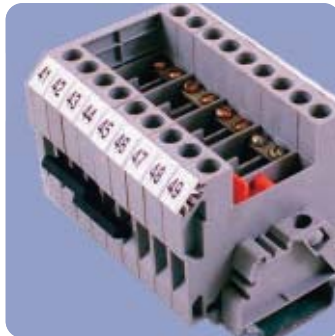
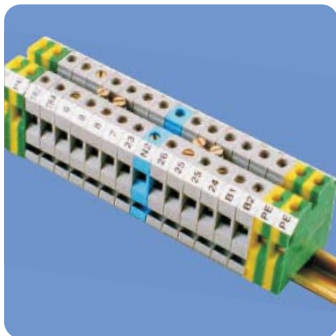


COVER



SIDEPL1

connectech TERMINALS



Salzer Electronics Limited - Unit II

Chinnamadampalayam, Coimbatore - 641 019, India.

Tel : +91- 4254 - 302000, 272013, 272181 | Fax : +91- 4254 - 272012. e-mail : sales2@salzergroup.com