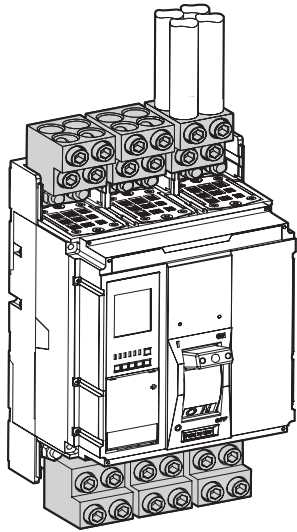


The device connectors MOREK 240 are used to connect copper and aluminium wires to devices. Device connectors enable to connect three or four wires up to 240 mm<sup>2</sup>. Their compact economic design is characterized by small size and easy installation.



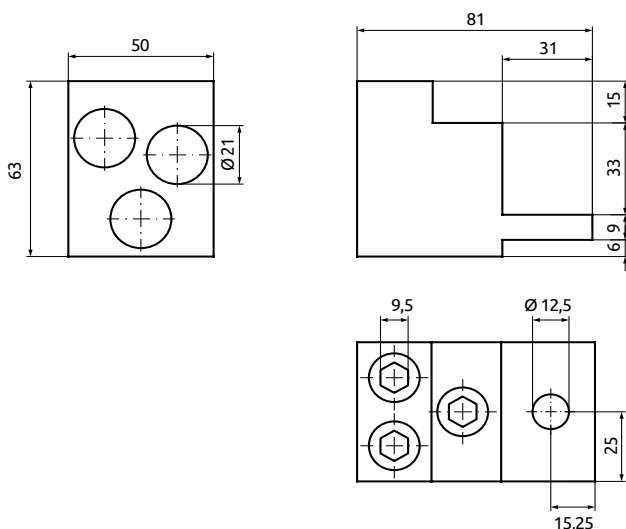
OTH 240-3

OTH 240-4

	MAC3240A14	MAC4240A14
<b>Technical data</b>		
Conductor cross-section Cu, Al (mm <sup>2</sup> )	3 x 85 ÷ 240	4 x 85 ÷ 240
Nominal current (A)	800	1250
Width / Height / Length (mm)	50 / 63 / 82	54 / 63 / 86
Number of mounting holes	1	2
Diameter connecting hole (mm)	12.5	10.5
Screw, hexagonal key	9.5 mm	9.5 mm
The length of the insulated conductor (mm)	25 ÷ 48	25 ÷ 55
Tightening torque (Nm)	42	55
Weight (g)	310	344
Package (pcs)	3	3

## Dimensions

OTH 240-3



OTH 240-4

