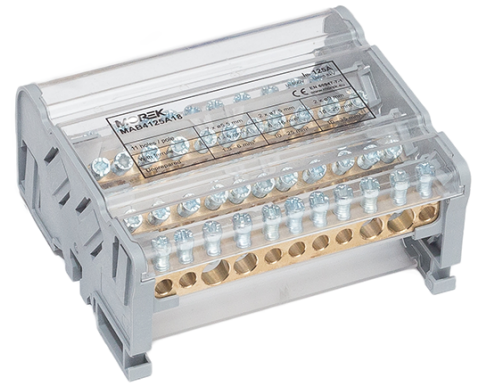


Moblock 4P 125A-11 2x35 + 2x25 + 7x6mm² Distribution block

SKU	MAB4125A18
EAN	4744397013620
Color	Grey
Wire material	Cu
Cross-section min. (mm²)	1,5
Cross-section max. (mm²)	35
Input wire min. (mm²)	2 x 10
Input wire max. (mm²)	2 x 35
Output wire min. (mm²)	7 x 1,5 / 2 x 10
Output wire max. (mm²)	7 x 6 / 2 x 25
Number of connections	11
Nominal current (A)	125
Nominal voltage (V)	500
Short-circuit resistance (kA/1s)	4,2
Rated surge voltage (kV)	8
Material	Brass, galvanized steel, polyamide PA66, polycarbonate
Mounting method	DIN rail, screw
Item width (mm)	97
Item length (mm)	108
Item height (mm)	52
Item weight (g)	294
Tightening torque (Nm)	2,5 Nm
Certification	EN 60947-1; EN 609947-7-5



Flame resistance	UL94 V0
CN8 code	85369010
Package quantity (pcs)	1